

**Victoria Court**  
**Allesley Hall Drive**  
**£900 PCM**



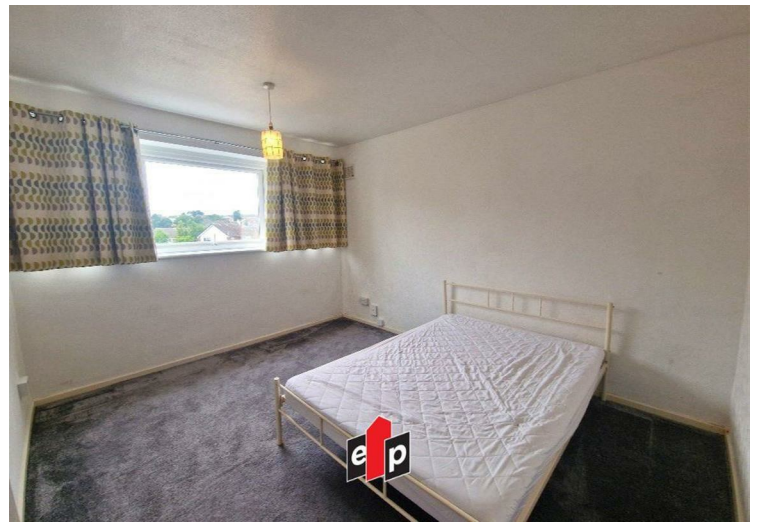
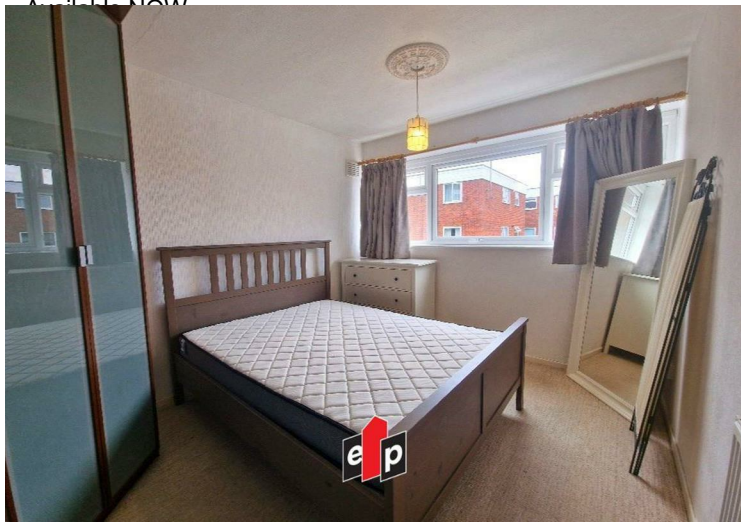
This well-presented two-bedroom second floor apartment is available to rent on an unfurnished basis and is situated within the well-maintained and attractive grounds of Victoria Court, in the highly desirable area of Allesley Park.

The property is ideally located just a short walk from Allesley Park itself and benefits from excellent transport links, including easy access to the A46 and regular bus routes into Coventry City Centre, making it convenient for both commuters and local amenities.

The accommodation briefly comprises an entrance hallway, a spacious lounge and dining area with access to a balcony, a separate fitted kitchen, two good-sized double bedrooms, and a modern shower room.

Further benefits include gas central heating, double glazing throughout, communal parking, and access to well-maintained communal gardens, providing a pleasant and peaceful residential environment.

- EPC Rating: C
- 2nd Floor Apartment
- Unfurnished
- Spacious Lounge With Balcony
- Separate Fitted Kitchen
- Two Bedrooms
- Gas Central Heating & Double Glazing
- Communal Parking & Gardens
- Council Tax Band: B



**PLEASE NOTE: General Information**

We have been informed by the vendor that the tenure of the property is . However, you are recommended to have this information verified by your legal advisor at the earliest opportunity. All measurements are approximate and quoted in metric and are for general guidance only and whilst every attempt has been made to ensure accuracy, they must not be relied on. The fixture, fittings and appliances referred to have not been tested and therefore no guarantee can be given that they are in working order. Internal photos are produced for internal general information and it must not be inferred that any item would be included within the sale.

**Elite Property**

**Sterling House, 112 Walsgrave Road, Stoke, Coventry, West Midlands, CV2 4ED**

**Tel: 024 7665 2200**

**www.eliteproperty.co**

