



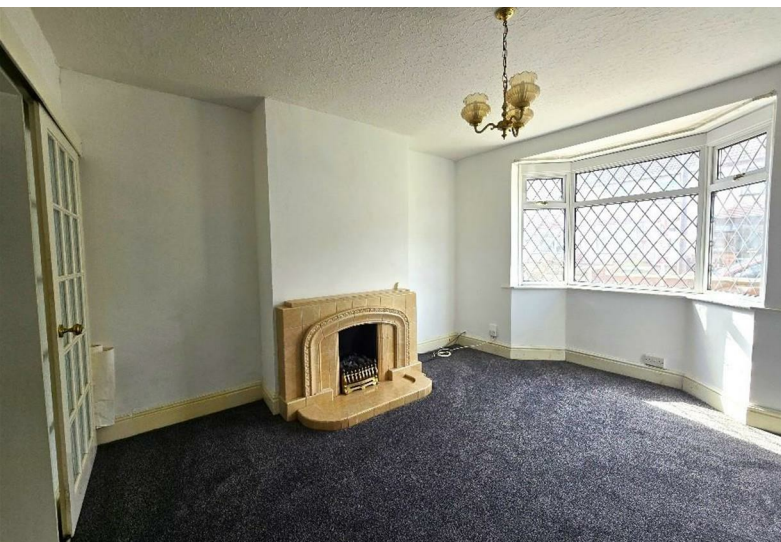
x3



x2



x1



**Wyken Avenue
Wyken**

£1,100 Per Calendar Month



This three-bedroom end-of-terrace house is an excellent family home, available on an unfurnished basis. It is ideally located close to bus links to University Hospital Coventry & Warwickshire and local primary and secondary schools.

The property features a spacious through lounge and dining room with sliding doors leading to the rear garden, a galley-style fitted kitchen ground floor W.C., a family bathroom on the first floor, and two double bedrooms along with one single bedroom.

Additional benefits include gas central heating, double glazing, and enclosed front and rear gardens.

- EPC: TBC
- End-of-Terrace House
- Unfurnished
- Through Lounge/Dining Room
- Galley-Style Fitted Kitchen
- Two double & One Single Bedroom
- First floor Family Bathroom
- Convenient Location
- Gas Central Heating & Double Glazing
- Council Tax Band: B



PLEASE NOTE: General Information

All measurements are approximate and quoted in metric and are for general guidance only and whilst every attempt has been made to ensure accuracy, they must not be relied on. The fixture, fittings and appliances referred to have not been tested and therefore no guarantee can be given that they are in working order. Internal photos are produced for internal general information and it must not be inferred that any item would be included within the rental.

Elite Property
Sterling House, 112 Walsgrave Road, Stoke, Coventry, West Midlands, CV2 4ED
Tel: 024 7665 2200
www.eliteproperty.co

